

## Reading A & D: VIOLIN

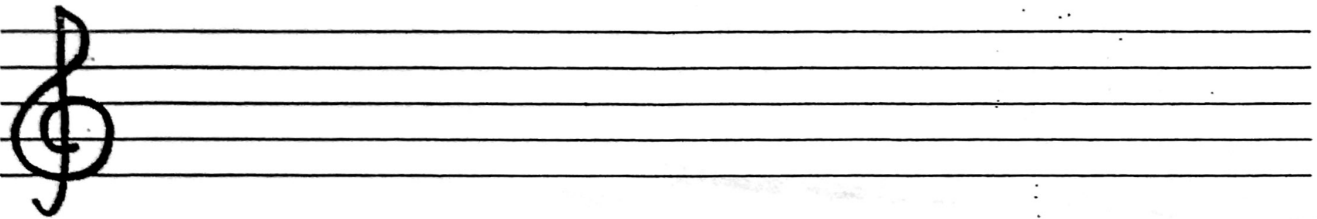
The violin reads music in the TREBLE clef:



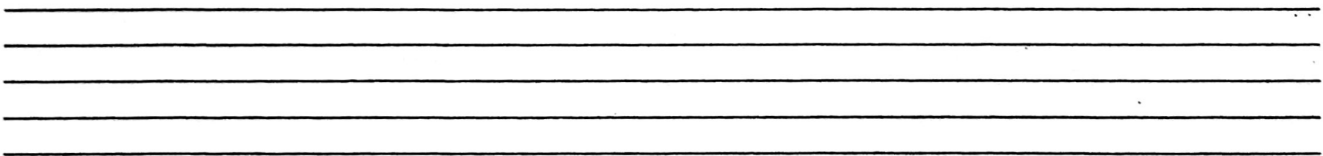
In the treble clef, your open A and D strings look like this:



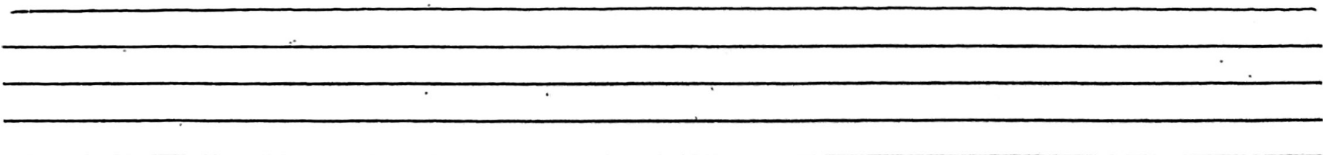
Practice drawing your treble clef on the staff below:



Draw your clef, the 4/4 time signature, and four A's on the staff below:



Draw your clef, the 4/4 time signature, and four D's on the staff below:



Use the back of this page to make up your own D and A song (you can use notes AND rests). Remember to start EACH LINE with a treble clef.

Then write your time signature (4/4). After every four beats, draw a bar line. And end your song with a double bar!



Handwritten musical notation on a five-line staff, consisting of several horizontal lines.

Handwritten musical notation on a five-line staff, consisting of several horizontal lines.

Handwritten musical notation on a five-line staff, consisting of several horizontal lines.



Handwritten musical notation on a five-line staff, consisting of several horizontal lines.

Handwritten musical notation on a five-line staff, consisting of several horizontal lines.

Handwritten musical notation on a five-line staff, consisting of several horizontal lines.

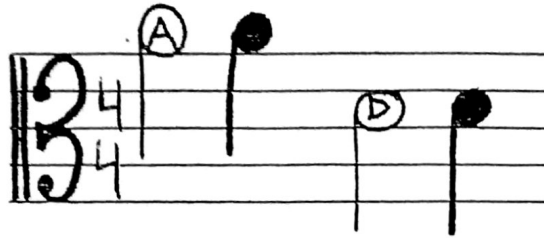


## Reading A & D: VIOLA

The viola reads music in the ALTO clef:



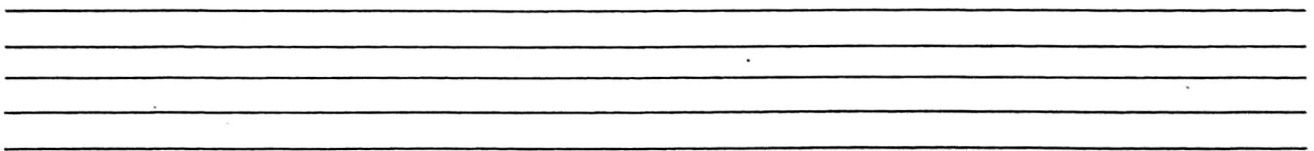
In the alto clef, your open A and D strings look like this:



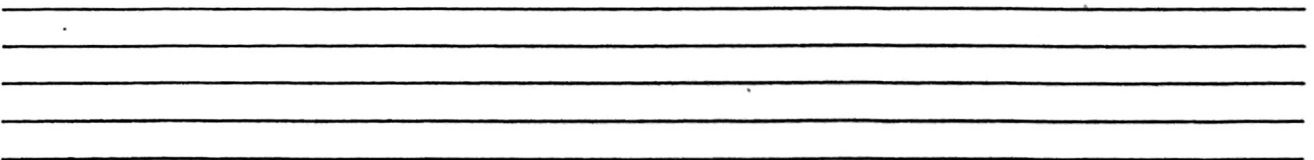
Practice drawing your alto clef on the staff below:



Draw your clef, the 4/4 time signature, and four A's on the staff below:



Draw your clef, the 4/4 time signature, and four D's on the staff below:



Use the back of this page to make up your own D and A song (you can use notes AND rests).  
Remember to start EACH LINE with an alto clef.  
Then write your time signature (4/4). After every four beats, draw a bar line.  
And end your song with a double bar!



Handwritten text on the first set of five lines.

Handwritten text on the second set of five lines.

Handwritten text on the third set of five lines.




Handwritten text on the fourth set of five lines.

Handwritten text on the fifth set of five lines.

Handwritten text on the sixth set of five lines.



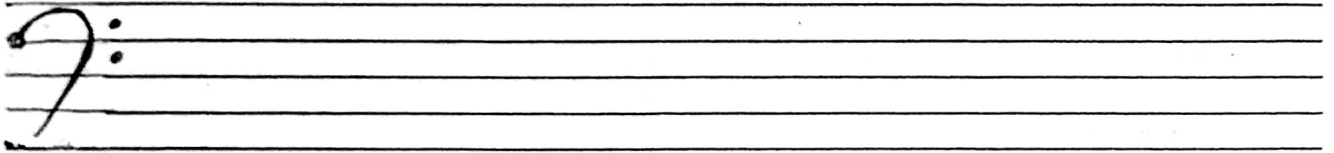
## Reading A & D: CELLO

The cello reads music in the ~~bass~~ clef: 

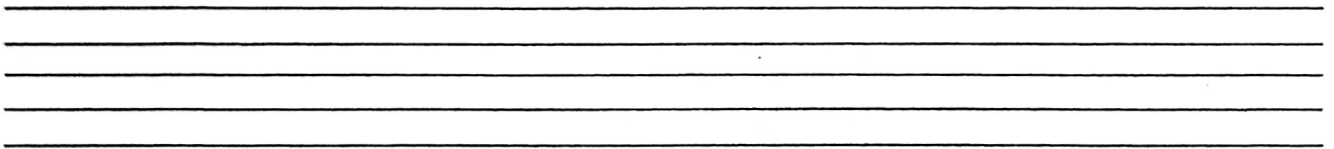
In the ~~bass~~ clef, your open A and D strings look like this:



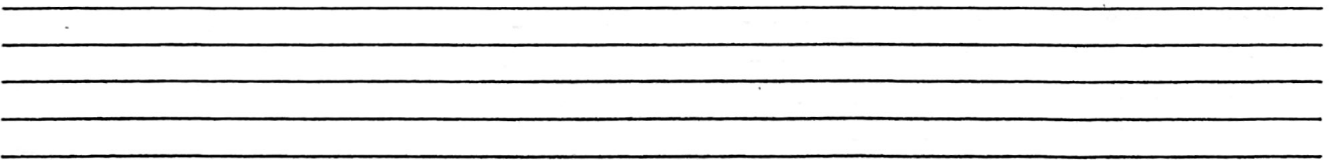
Practice drawing your ~~bass~~ clef on the staff below:



Draw your clef, the 4/4 time signature, and four A's on the staff below:



Draw your clef, the 4/4 time signature, and four D's on the staff below:



Use the back of this page to make up your own D and A song (you can use notes AND rests). Remember to start EACH LINE with a ~~bass~~ clef. Then write your time signature (4/4). After every four beats, draw a bar line. And end your song with a double bar!

\_\_\_\_\_

\_\_\_\_\_

\_\_\_\_\_

\_\_\_\_\_

\_\_\_\_\_

\_\_\_\_\_

\_\_\_\_\_

\_\_\_\_\_

\_\_\_\_\_

\_\_\_\_\_

\_\_\_\_\_

\_\_\_\_\_

\_\_\_\_\_

\_\_\_\_\_

\_\_\_\_\_

\_\_\_\_\_

\_\_\_\_\_

\_\_\_\_\_

\_\_\_\_\_

\_\_\_\_\_

\_\_\_\_\_

\_\_\_\_\_

\_\_\_\_\_

\_\_\_\_\_

\_\_\_\_\_

\_\_\_\_\_


\_\_\_\_\_

\_\_\_\_\_

\_\_\_\_\_

\_\_\_\_\_

## Reading A & D: BASS

The **bass** reads music in the **bass** clef: 

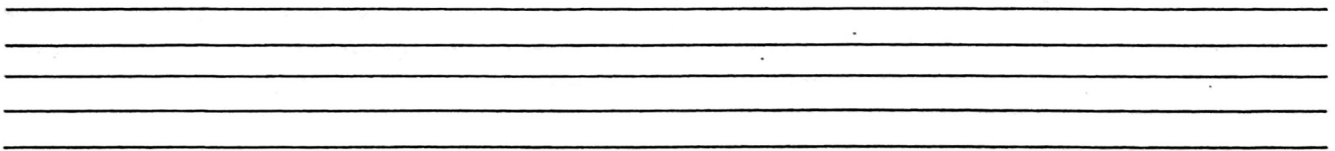
In the **bass** clef, your open A and D strings look like this:



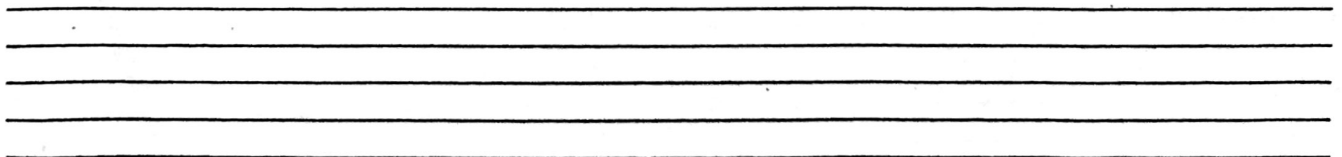
Practice drawing your **bass** clef on the staff below:



Draw your clef, the 4/4 time signature, and four A's on the staff below:



Draw your clef, the 4/4 time signature, and four D's on the staff below:



Use the back of this page to make up your own D and A song (you can use notes AND rests).  
Remember to start EACH LINE with a **bass** clef.  
Then write your time signature (4/4). After every four beats, draw a bar line.  
And end your song with a double bar!



\_\_\_\_\_

\_\_\_\_\_

\_\_\_\_\_

\_\_\_\_\_

\_\_\_\_\_

\_\_\_\_\_

\_\_\_\_\_

\_\_\_\_\_

\_\_\_\_\_

\_\_\_\_\_

\_\_\_\_\_

\_\_\_\_\_

\_\_\_\_\_

\_\_\_\_\_

\_\_\_\_\_



\_\_\_\_\_

\_\_\_\_\_

\_\_\_\_\_

\_\_\_\_\_

\_\_\_\_\_

\_\_\_\_\_

\_\_\_\_\_

\_\_\_\_\_

\_\_\_\_\_

\_\_\_\_\_

\_\_\_\_\_

\_\_\_\_\_

\_\_\_\_\_

\_\_\_\_\_

\_\_\_\_\_

